



Keeping Families Close[®]

2022 Impact Report





Natasha and Ava

Meet the Ballard Family

At 23 ½ weeks pregnant, during a routine check-up with her doctor, Natasha was told that she and her unborn baby's lives were at risk. Natasha was rushed from her home in the Bronx to New Haven, Connecticut, where her baby would have a better chance of survival. Less than 48 hours later, Ava was born. She weighed just one pound and five ounces.

Natasha was told to expect the worst. When she was discharged from the hospital, she began to panic – Ava couldn't leave, and home was two hours away. Natasha wanted to be near her baby. That was when a social worker told her about Ronald McDonald House. She couldn't believe that she would have a place to stay, right across the street from the hospital, and at no cost to her.

Natasha was able to stay at Ronald McDonald House for 169 nights while Ava grew stronger. At RMH, Natasha had her own space, a kitchen to use, and meals provided for her. She could spend time with other families who were going through similar experiences, all while being just steps away from Ava.

"It helps give a sense of normalcy. You can be around other families who are going through things too, but you get to laugh and to focus on something else for a little while. I felt happy, and I didn't feel guilty about being away from my daughter for a little bit. It's a space where you can feel like you have family and connect with other people, and not feel like you're going through this alone, because that is mentally taxing. It's hard not to break down, but that really helped keep me together.

This place is a godsend. It's taken away all the stress of not knowing where I could sleep, of not being close to my baby. I can't even describe the feeling. It's amazing, to go through the tough time I was going through, to feel that there's a place and people around who care. The financial burden it removed was incredible. I'm so grateful that I have a place where I could rest that was so close to my daughter. I could watch her grow and get the best care that she needed, and I could take care of myself."

STAYING CLOSE TO WHAT MATTERS MOST

2022 BOARD OF DIRECTORS

President

Stuart Young

Vice President

Cynthia Tanon-Santos

Treasurer

John Skelly

Secretary

Louis Goodrum

Directors

Edward Abraham
Todd Bailey
Matthew Bizzaro, MD
Rob Caiaze
Jeff Cumberbatch
David Edwards
Arthur Erickson
John Glenn
Stacia Grosso
Lauren Mallozzi
Kathleen Noone
Guido Petra
Nancy Rines
Pat Sheehy
Cynthia Sparer
Scott Taylor
Denise Walker
Thomas Walsh
Sabrina Wright

The Impact of Care

What does it mean to make an impact on an RMHC family?

When families need our Ronald McDonald Houses, it is because they have a child who is receiving critical medical care that they cannot access close to home. They are away from their friends, their support network, and the things that are most comfortable and familiar. In addition to these challenges, families often face financial burdens of needing a place to stay, meals to eat, and daily necessities.

While we do not have the ability to change their situation, our Houses can provide comfort, kindness, and compassion to families while they call us 'home' for however long they need. We offer a warm bed to sleep in, a kitchen to make favorite meals, and spaces for fun and relaxation in between appointments. More than that, families know they will be surrounded by caring people who can provide a smile, a listening ear, and a hug. Every day, we get to witness the tremendous impact that these small gifts can have on the families who need our help.

Providing this care to families is not something RMHC of Connecticut & Western Massachusetts can do on its own. It is because of our network of dedicated volunteers, generous donors, and compassionate staff that we can support hundreds of families each year. The work that we do would not be possible without you.

Your ongoing support allows us to continue to care for families. As long as they need us, we need you.

With gratitude,



Stuart Young
President



Michelle D'Amore
Chief Executive Officer

Our Impact

335

families stayed
in our Houses



Families received
6,046
nights of care and
comfort

2 out of every 5 families stayed for more than 1 week



Families came from
24 states & **6** countries

452 volunteers donated
a total of **5,551** hours



Our Houses saved families

\$1,505,360

in lodging and meal expenses.





Ronald McDonald House of Connecticut

Featuring 18 guest rooms and 2 respite rooms, the Ronald McDonald House of Connecticut serves families from Yale New Haven Children's Hospital and healthcare facilities around Connecticut. For over 35 years, the Ronald McDonald House of Connecticut has provided a home away from home for families, initially at 501 George Street and now at 860 Howard Avenue.

RMH of Connecticut Advisory Council

Lauren Mallozzi (President), Eileen Baker, Diana Caty, Arthur Erickson, Peggy Fay, Ellen Good, Christine Higgins, Larry Lazaroff, Julia McFadden, Bernadette Mele, Tom Mercaldo, Jennifer Mineri, Lou Proto, Cynthia Tanon-Santos

RMH of Connecticut Impact

92% of nights were provided to guest families who could not contribute to their stay

\$176,426 in goods, services, meals, and snacks were donated to families

**Top CT counties families reside:
Fairfield
New London
New Haven**

RMH of Springfield Impact

**1 of every 2
families served
came to our House
from outside of
Massachusetts**

**2,144 volunteer hours
were spent cooking
meals, helping at
events, and serving
our families**

**Top MA counties
families reside:
Berkshire
Franklin
Hampden**



Ronald McDonald House of Springfield

Since 1991, the Ronald McDonald House of Springfield has provided thousands of families with a home away from home, serving Baystate Children's Hospital and Shriners' Hospital for Children. The House provides a comforting environment where families can truly relax and focus on their child's care and healing.

RMH of Springfield Advisory Council

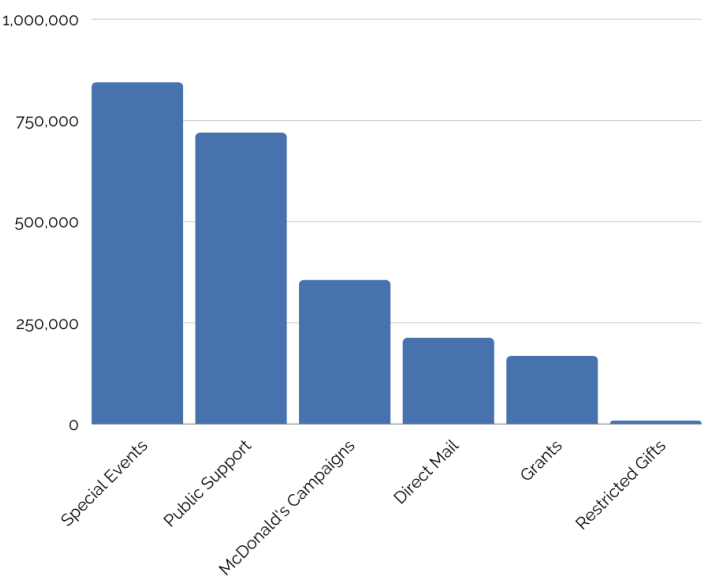
Denise Walker (President), Carlene Bailey, Myra Camilleri, Ashley Christman, Annamarie Golden, Jessica Hagerman, Shannon Jarry, Todd Lajoie, Darlene Mark, Cindy O'Malley, Matt Perry, Bryan Picard, Thia Ploubides, Anthony Rino, Niki Santos, James Watts



2022 SUPPORT & IMPACT

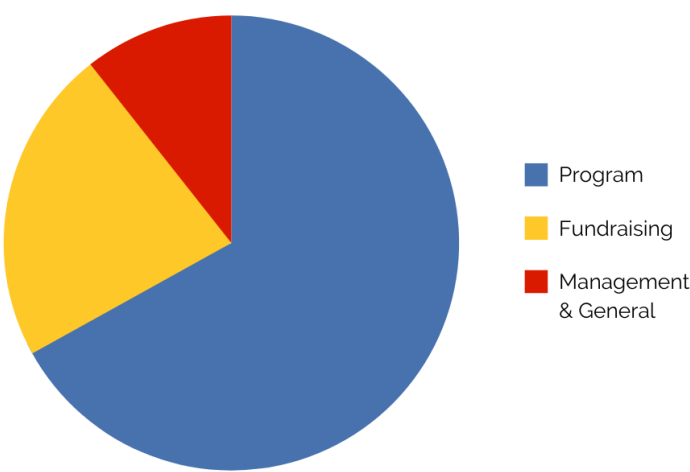
Top Revenue Sources

Special Events	\$843,392
Public Support	\$718,768
McDonald's Campaigns	\$354,741
Direct Mail	\$211,714
Grants	\$167,208
Restricted Gifts	\$7,000



Expenses

Program	\$2,169,025
Fundraising	\$727,457
Management & General	\$344,272



2023 RMHC CTMA STAFF

Michelle D'Amore - Chief Executive Officer

Caroll Alvarado

Guest & Volunteer Coordinator, RMH Springfield

Jane Capua

Donor Database Coordinator

Emily Davidson

Administrative Assistant

Stephanie Frenkel

Event Coordinator, RMH Connecticut

Celine Hamilton Quill

House Manager, RMH Springfield

Marissa Hedman

Communications & Digital Fundraising Coordinator

Melissa Kenniston

House Manager, RMH Connecticut

Emily Lopez

Guest & Volunteer Coordinator, RMH Connecticut

Richard Popilowski

Director of Principal and Major Gifts

Rosemarie Zello

Development Manager, RMH Springfield

Cathy Zorgo-Bignolas

Director of Communications and Marketing

Connecticut House

Night Managers

Viviana Alvarez

Melanie Burgos

Deneisha Davis

Jirina Fargeorge

Lee Grenier

Leidene LaViera

Glenda Maldonado

Stephanie Nugent

Stacie Tavaras

Danique Williams

Housekeeping

Digna Burgos

Anabel Caporal

Rosa Muriel

Maria Perez

Springfield House

Night Managers

Kyla Burgess

Shakura Coffman Meadows

Jazmin De la Cruz

Briana De Souza

N'Tasia Meadows

Addie Patterson

Emma Patterson

Joe Shepard

Ashley Terron

Noelia Ramos

Yamika Rodriguez

Housekeeping

Gisela Lopez

Yamika Rodriguez

Maintenance

Luis Rivera

OUR MISSION

To create, identify and support programs that directly improve the health, education, and wellbeing of children and families in Connecticut and Western Massachusetts, including operating its cornerstone programs, the Ronald McDonald House® of Connecticut and the Ronald McDonald House of Springfield.



**Ronald McDonald
House Charities®**
of Connecticut &
Western Massachusetts

Ronald McDonald House of Connecticut

860 Howard Avenue
New Haven, CT 06519
203-777-5683

Ronald McDonald House of Springfield

34 Chapin Terrace
Springfield, MA 01107
413-794-5683

www.RMHC-CTMA.org

/RMHC.CTMA



@rmhcctma



@rmhcctma



bit.ly/3HoUck8

